



The County FOUNDATION ANNUAL REVIEW

Working together to build a place where
everyone belongs and all can thrive

20
22



ABOUT THE COUNTY FOUNDATION

The County Foundation is one of 201 community foundations across Canada, offering collaborative leadership and funding to support initiatives that benefit our community. Our ongoing work as an asset-builder and grant-maker provides a strategic perspective from which to see trends, challenges, and connections in our community. The County Foundation has 3 core activities:

Collecting and analyzing data to produce Vital Signs

Developing charitable funds and facilitating grants

Catalyzing and supporting collaborative action



Photo credit Paper Reflections

The Foundation's day-to-day work is managed by Executive Director Dominique Jones, and Vital Signs Coordinator Anne VanVlack (photo at left).

Our board members are individuals who generously volunteer their time, expertise and energy on our Board of Directors and committees. Their dedication and knowledge of the community help guide our work in the community.

2022 COMMUNITY SUPPORT INITIATIVES

- Facilitated almost \$1 million in total grants.
- Published the 2022 Vital Signs report "Toward Sustainable Change".
- Supported *Communities Building Youth Futures* youth leadership program.
- Collaborated in the development of the 2022-25 *Community Safety & Well-being Plan*.
- Partnered with *Thrive Prince Edward County*, a community-led development of a collaborative vision for the future of Prince Edward County.



REFLECTING ON 2022

Reflecting on 2022 we at The County Foundation can certainly say it was an eventful one not only for our organization but also for the community that we support.

Early in the year our Executive Director of 7 years, Jefferson Gilbert, bade us farewell to focus on other endeavors. Assuming Jefferson's role was Dominique Jones, bringing a background of finance, business and social impact.

In the fall of 2022, we released a new Vital Signs report, 'Toward Sustainable Change', highlighting the impact the pandemic has had on the County.

We also engaged in the valuable process of strategic planning and in organizational training in the area of diversity, equity and inclusion.

Our volunteer Board of Directors continued to give their passion and energy to the mission of The County Foundation, and we were saddened by the sudden loss of one of our Directors, Lynda Mungall. We are very fortunate to have such qualified and dedicated volunteers involved in both Board and project capacities and couldn't be where we are today without them.

The people of Prince Edward County continue to amaze and inspire us with their generosity and strength of spirit. As we look to 2023, we hope to continue to build on our progress to date and overcome challenges together.



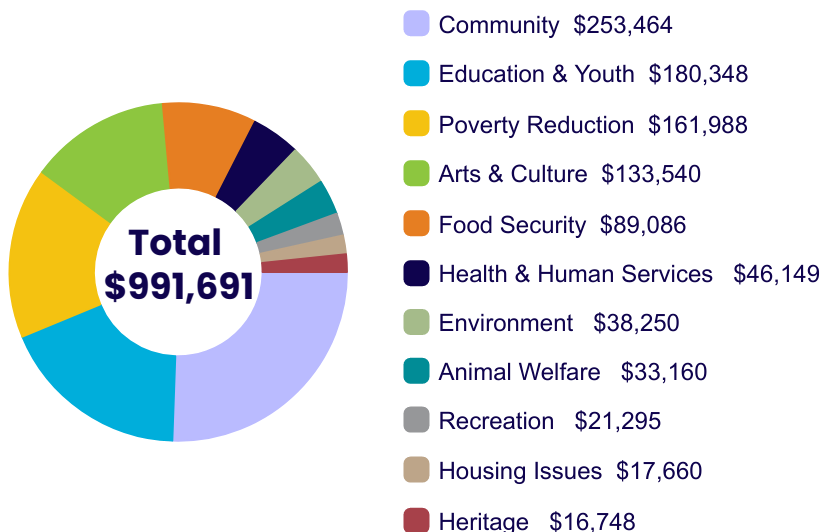
Brian Beiles
President



Dominique Jones
Executive Director

2022 GRANTING HIGHLIGHTS

Areas of Granting in 2022



Cumulative Impact

Since inception in 2008, The County Foundation has facilitated grants totalling \$4,220,004 to community organizations, focusing on the needs and sectors important to donors.



2022 GRANTING HIGHLIGHTS



Municipal Community Grants

\$246,441

Building community capacity



The Huff Family Fund

\$150,000

An investment in the future of Prince Edward County

Donor Advised Grants

\$389,460

Donors participate in the selection of charities that will benefit from the fund



Municipal Financial Relief Grants

\$140,750

Property tax and water/waste water relief for low-income households



Student Scholarships

\$34,040

Awarded in several subject areas



Municipal Agriculture Grants

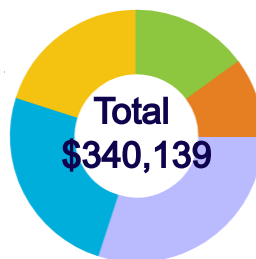
\$31,000

For agricultural entities to overcome obstacles

FINANCIAL MANAGEMENT

INCOME SOURCES

Investment Income	\$192,741
Philanthropic Service Provision	\$70,713
Fund administration fees	\$40,000
Donations	\$33,003
Project management fees	\$3,682



Thanks to those who gave individual and philanthropic financial gifts. These contributions make the work of The County Foundation possible.

FUNDS UNDER MANAGEMENT

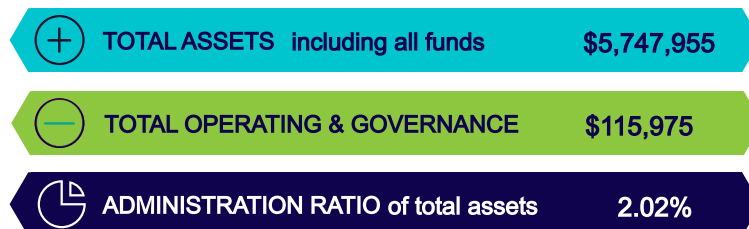
Year	Value	# of Funds
2022	\$5,747,955	29
2021	\$6,052,083	31
2020	\$5,729,737	30
2019	\$4,824,569	24*
2018	\$2,850,426	27
2017	\$290,320	20
2013	\$125,000	8



Our overall assets decreased slightly to \$5,747,955 partially due to investment market instability and annual disbursements.

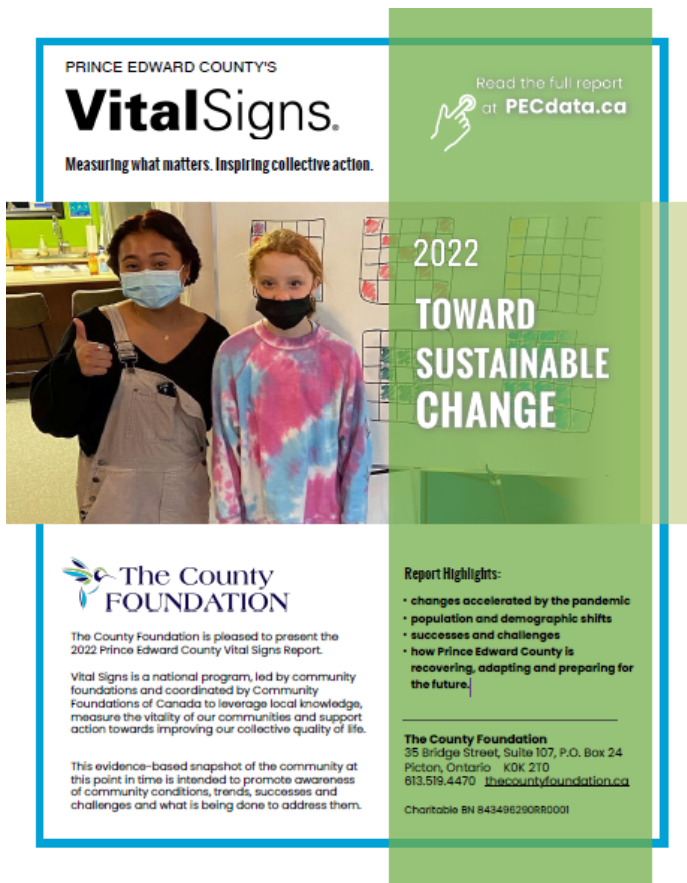
ASSETS & OPERATING EXPENSES

The operating and governance expenses for the Foundation totaled \$115,975 during the fiscal year equating to an administration ratio of 2.02% of total assets. Typical administrative ratios fall between 2.5%-4% for community foundations serving population sizes similar to Prince Edward.



VITAL SIGNS

Vital Signs is a national program, led by community foundations and coordinated by Community Foundations of Canada to leverage local knowledge, measure the vitality of our communities and support action towards improving our collective quality of life.



PRINCE EDWARD COUNTY'S
VitalSigns
Measuring what matters. Inspiring collective action.

Read the full report
at PECdata.ca

2022
**TOWARD
SUSTAINABLE
CHANGE**

**The County
FOUNDATION**

The County Foundation is pleased to present the 2022 Prince Edward County Vital Signs Report.

Vital Signs is a national program, led by community foundations and coordinated by Community Foundations of Canada to leverage local knowledge, measure the vitality of our communities and support action towards improving our collective quality of life.

This evidence-based snapshot of the community at this point in time is intended to promote awareness of community conditions, trends, successes and challenges and what is being done to address them.

Report Highlights:-

- changes accelerated by the pandemic
- population and demographic shifts
- successes and challenges
- how Prince Edward County is recovering, adapting and preparing for the future.

The County Foundation
35 Bridge Street, Suite 107, P.O. Box 24
Picton, Ontario K0K 2T0
613.519.4470 thecountyfoundation.ca
Charitable BN 843496290R0001

This evidence-based snapshot of the community at a point in time is intended to promote awareness of community conditions, trends, successes and challenges and what is being done to address them.

The 2022 Vital Signs Report "Toward Sustainable Change" highlighted:

- changes accelerated by the pandemic
- how Prince Edward County is recovering, adapting and preparing for the future.

“ We will pay heed to sources like the Vital Signs report from The County Foundation and the community discussion that Thrive Prince Edward County is facilitating. ”

Mayor Steve Ferguson
December 5, 2022

Watch for Vital Signs Focus Report 2023:
INCLUSION & BELONGING

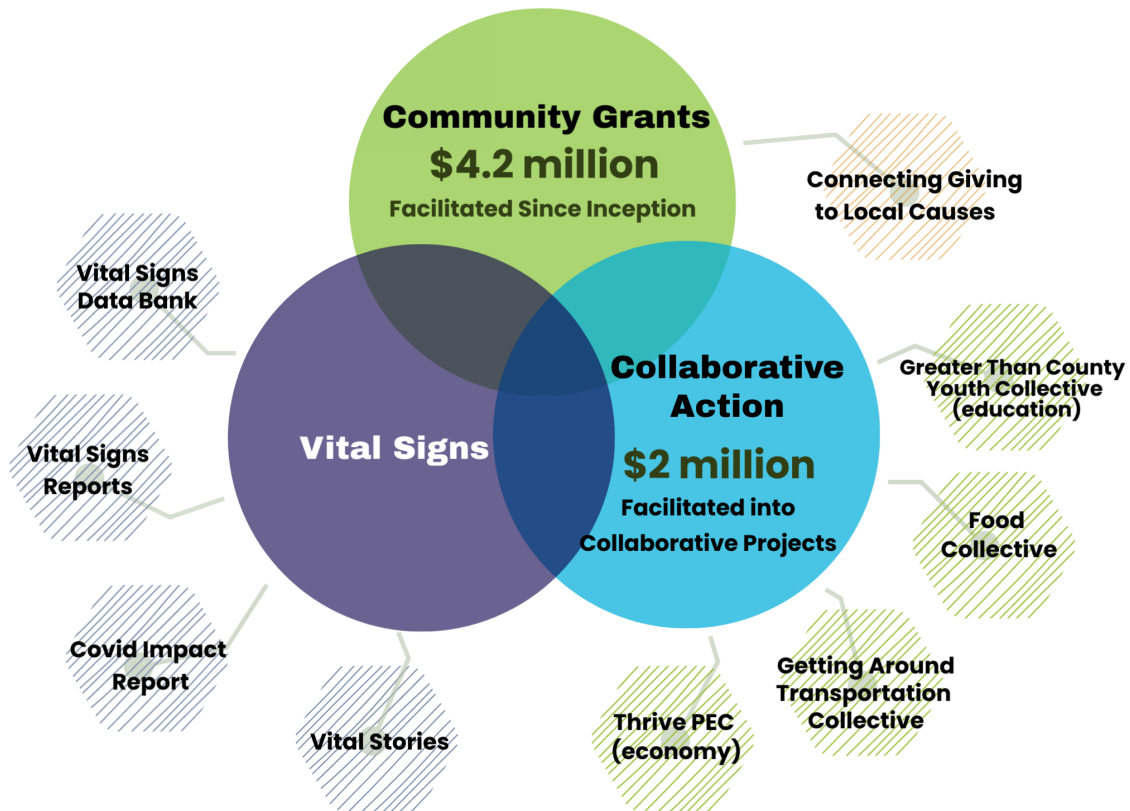


Visit PECdata.ca for more information about Vital Signs data.

Contact The County Foundation about a Vital Signs presentation for your organization.

VITAL IMPACT

Our vision is to improve the lives of present and future generations in Prince Edward County by working together to build a place where everyone belongs and all can thrive.



Collaborative Action

Through grants, volunteer time and backbone support, The County Foundation supports collaborative work and capacity-building in many core issue areas.

Collaborative community-based approaches to well-being can have a much greater impact than individual efforts. By taking joint action and engaging stakeholder expertise and insights, there is much greater potential for long-term, sustainable solutions.

WHY GIVE THROUGH THE COUNTY FOUNDATION?

Become more strategic with your giving. Leveraging the resources and know-how of your community foundation makes a lot of sense.

We are The County Foundation, created with the sole purpose of improving quality of life for people in The County. We continue this goal by highlighting residents' greatest needs, engaging donors and making grants. Through Vital Signs we provide the latest, focused research on Prince Edward County and work with our community partners to overcome obstacles and working towards creating a County where everyone belongs and thrives.



HOW TO CREATE AN IMPACT

There are many ways to get involved and create real impact here in Prince Edward County.

- Consider donating to one of our Community Benefit funds including: TCF Community Fund to address Vital Signs priorities and PEC Helping PEC Fund for Food Security and Health.

Create a fund or make a bequest.

- The County Foundation handles all the backend administration including tax receipting and CRA reporting and helps you build your philanthropic plan.

Our Executive Director, Dominique Jones, is happy to help you navigate your gifting options to find the best solution for you and our community. Please reach out by email for an appointment.



ed@thecountyfoundation.ca

The County Foundation



www.thecountyfoundation.ca



613.519.4470



info@thecountyfoundation.ca



35 Bridge Street, Suite 107, P.O. Box 24
Picton, ON K0K 2T0

Registered Charity #843496290RR0001

a proud member of



**COMMUNITY
FOUNDATIONS
OF CANADA**